



Bal Bharati
PUBLIC SCHOOL
PITAMPURA

HOLIDAY HOMEWORK

CLASS X- 2024-25

*IN SUMMER'S WARMTH, WE FIND
DELIGHT,
WITH DAYS SO LONG AND SKY SO
BRIGHT.
THROUGH BOOKS AND NATURE, WE'LL
FIND OUR WAY,
DISCOVERING WONDERS EVERY SINGLE
DAY.
IN THIS SEASON OF SUNSHINE AND
BLUE,
THERE'S ENDLESS KNOWLEDGE
WAITING FOR YOU.*



Bal Bharati
PUBLIC SCHOOL
PITAMPURA

Dear Parents

The much awaited Summer Vacation has begun and we are excited to present meticulously curated Holiday Homework for the academic year 2024-25.

This year's assignment is packed with a diverse range of tasks and projects to ignite the imagination of our students. From exploring nature to creating work of art, there's something for everyone. At Bal Bharati Public School, Pitampura, as we prioritize academic growth, we equally value the significance of relaxation and rejuvenation. We urge our students to seize this opportunity to unwind, cherish quality moments with family, and engage in activities that ignite joy. Our aim is not only stimulate our students intellectually but also encourage them to discover new interests and talents.

In an endeavour to foster holistic development of students, each subject related task is based on different levels of Bloom's Taxonomy and caters to various skills, competencies and interests. Let us together guide our students to discover and utilize their individual strengths and talents. We are grateful for your unwavering support in all our endeavours.

Warm Regards

Ms. Meenu Goswami (Principal)

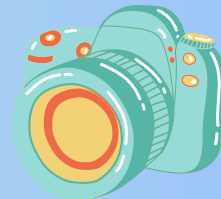


Suggested Bucket List for You:-

1. Organize a Book Club: Start a book club with friends and read books you've always wanted to read but never had time to do so.



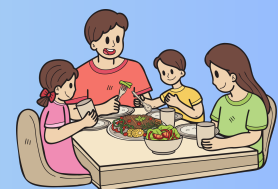
2. Learn a New Skill: Learn a new skill, such as cooking, coding, photography, or a new language.



3. Ditch your Gadgets : Set limits on screen time not just for yourself but for the entire family. Establish a household rule that says gadgets need to be shut off at certain times.



4. Eat Dinner Together: Eat at least one meal with your family.





The Holiday Homework has the following components:

1. Ek Bharat Shresth Bharat Project based on Lakshadweep and the Andaman and Nicobar Islands. It also includes compulsory CBSE Social Science Project.
2. Revision Assignments
3. MCQ Tests - Link of the Google Form will be shared on the class group twice per week as per the schedule given below :-

| Week | Monday | Thursday |
|--------------------------|----------------|-----------------|
| 3 June - 7 June | Maths | Science |
| 10 June - 14 June | Social Science | Hin/San |
| 17 June - 21 June | English | Maths |

Note- The syllabus for the MCQ Test will be same as that of PT-1



General Guidelines for Holiday Homework Project:

1. All the components of Holiday Homework are mandatory.
2. Students are required to create a project file to compile all the subject based activities including social science project.
3. The project file must consist of:
 - Index page
 - Subject based tasks
 - Last Page *Exit Ticket*- Your learning
4. Design an interesting cover page. It should be designed aesthetically and creatively indicating the name of the student along with the class, section, and session (2024-25).
5. You may make a collage of photographs to demonstrate a particular point.
6. You may use newspaper clippings.
7. Revision Assignments must be attempted.

Assessment Criteria

- Understanding of the concept of EBSB and its goals.
- Clarity and Coherence in presenting the ideas related to development and other initiatives.
- Creativity in proposing solutions.
- Depth of research and incorporation of relevant facts and statistics.
- Presentation quality, including organization, neatness and adherence to the guidelines.

LAST DATE OF SUBMISSION : JULY 5, 2024



Bal Bharati
PUBLIC SCHOOL
PITAMPURA

1. EK BHARAT SHRESHTH BHARAT

| SUBJECT | ENGLISH | | | | | | |
|---------------------------------|--|-----------------------------|---------|-----------------------|---------|-----------|--------|
| TOPIC-PROJECT / ACTIVITY | <p>Students will design a captivating logo to promote tourism in the Andaman and Nicobar Islands. The logo should encapsulate the islands' tropical beauty, incorporating elements such as palm trees, waves, marine life, and cultural motifs. The logo can be created digitally using graphic design software or hand-drawn and scanned. Students should ensure high-resolution quality and clarity in their designs. Students will submit their tourism-promoting logo and a brief description (50-100 words) explaining the symbolism and inspiration behind their design choices.</p> | | | | | | |
| LEARNING OUTCOME/SKILL ENHANCED | <p>Each learner will be able to:</p> <ul style="list-style-type: none">• create a relevant logo after researching the details related to tourism.• critically assess the logo design, identify and explain the symbolism behind each element chosen to represent the islands' unique identity. | | | | | | |
| RESOURCES | <p>https://www.andamantourism.gov.in/</p> | | | | | | |
| MODE OF SUBMISSION | <p>Offline- A4 Size sheet You may get the printout of the digital logo created by you. However, the write-up must be handwritten.</p> | | | | | | |
| RUBRICS | <table><tbody><tr><td>Creativity and Presentation</td><td>2 marks</td></tr><tr><td>Research and Write-up</td><td>2 marks</td></tr><tr><td>Relevance</td><td>1 mark</td></tr></tbody></table> | Creativity and Presentation | 2 marks | Research and Write-up | 2 marks | Relevance | 1 mark |
| Creativity and Presentation | 2 marks | | | | | | |
| Research and Write-up | 2 marks | | | | | | |
| Relevance | 1 mark | | | | | | |



Bal Bharati
PUBLIC SCHOOL
PITAMPURA

| SUBJECT | SCIENCE |
|---------------------------------|--|
| TOPIC-PROJECT / ACTIVITY | <p>Sustainable Livelihood Considerations for Disaster Risk Management)</p> <ul style="list-style-type: none">• Depict the raw energy of tsunami waves through dynamic paintings capturing the Physics behind their formation and propagation.• Additionally, create an anchor chart (on A4 sheet) on mitigation strategies and the pivotal role of Physics in crafting early warning systems to mitigate the impact of future tsunamis. |
| LEARNING OUTCOME/SKILL ENHANCED | <p>Each child will be able to:</p> <ul style="list-style-type: none">• apply/understand the scientific knowledge/concept of physics behind tsunami formation• correlate the practical skills that are relevant to understanding and addressing real-world challenges. |
| RESOURCES | <p>https://www.noaa.gov/jetstream/prep-com</p> |
| MODE OF SUBMISSION | <p>Offline-A4 size sheets</p> |
| RUBRICS | <p>Presentation- 2 marks Content- 2 marks Creativity- 1 mark</p> |



| SUBJECT | MATHEMATICS | | | | | | |
|----------------------------------|--|-----------------------------|---------|------------------------|---------|-----------|--------|
| TOPIC-PROJECT / ACTIVITY | <ul style="list-style-type: none">• Draw the image of the State Emblem of Lakshadweep on a graph paper using the concept of Cartesian Plane.• The image must be symmetric with respect to the Y axis.• Write a brief note on the mathematical concepts applied in this such as Symmetry, area of 2D shapes and mirror image etc. | | | | | | |
| LEARNING OUTCOME/ SKILL ENHANCED | Each student will be able to: <ul style="list-style-type: none">• draw the state emblem of Lakshadweep on a graph paper.• analyze the significance of its different components.• identify the different mathematical concepts used in this. | | | | | | |
| RESOURCES | https://en.m.wikipedia.org/wiki/Emblem_of_Lakshadweep | | | | | | |
| MODE OF SUBMISSION | Offline - A4 size sheets | | | | | | |
| RUBRICS | <table><tr><td>Creativity and Presentation</td><td>2 marks</td></tr><tr><td>Research and Write- up</td><td>2 marks</td></tr><tr><td>Relevance</td><td>1 mark</td></tr></table> | Creativity and Presentation | 2 marks | Research and Write- up | 2 marks | Relevance | 1 mark |
| Creativity and Presentation | 2 marks | | | | | | |
| Research and Write- up | 2 marks | | | | | | |
| Relevance | 1 mark | | | | | | |



Bal Bharati
PUBLIC SCHOOL
PITAMPURA

| | |
|--|---|
| SUBJECT | SOCIAL SCIENCE |
| TOPIC-PROJECT / ACTIVITY | <p>Empowering Today, Preserving Tomorrow: Sustainable Development for a Better Future.</p> <ul style="list-style-type: none">• The students will create an advertisement citing ways to promote sustainable tourism on the island groups of India.• They will present their ideas with relevant pictures and information on an A4 size sheet. |
| LEARNING OUTCOME/SKILL ENHANCED | <p>Each student will be able to:</p> <ul style="list-style-type: none">• examine the need to use sustainable ways of tourism.• create ideas to promote sustainable development. |
| RESOURCES | <p>https://sustainable.tourism.gov.in/</p> |
| MODE OF SUBMISSION | <p>Offline -A4 size sheet.</p> |
| RUBRICS | <p>Presentation- 2 Marks Content- 2 Marks Relevance- 1 Mark</p> |



Bal Bharati
PUBLIC SCHOOL
PITAMPURA

SOCIAL SCIENCE PROJECT

It is mandatory for every student to undertake a project on: (One Project out of the three options given below)

Consumer Awareness OR Social Issues OR Sustainable Development

Objectives: The overall objective of the project work is to help students gain an insight and pragmatic understanding of the theme and see all the Social Science disciplines from an interdisciplinary perspective. It should also help in enhancing the Life Skills of the students.

Students are expected to apply the Social Science concepts that they have learnt over the years in order to prepare the project report. If required, students may go out to collect data and use different primary and secondary resources to prepare the project. If possible, various forms of art may be integrated in the project work.

TOPIC: CONSUMER AWARENESS JAAGO GRAHAK JAAGO

The need for empowerment of consumers as a class cannot be over-emphasized and is already well recognized all over the world. In today's scenario the consumer should be empowered with respect to his rights as a consumer. Recognizing the importance of Consumer awareness, the Government of India has given certain rights to the consumers so that they can protect themselves from exploitation of the sellers and traders.

Create an advertisement on **JAAGO GRAHAK JAAGO** on an A4 size sheet. The advertisement can be either drawn or can be created by using clip art.

ASSESSMENT CRITERIA

Competencies exhibited and Presentation- 2 Marks

Content accuracy, originality and collaborative skills- 2 Marks

Viva- 1 Mark



Bal Bharati
PUBLIC SCHOOL
PITAMPURA

SOCIAL SCIENCE PROJECT

TOPIC: SOCIAL ISSUE

A social issue is a problem that affects the well-being and functioning of individuals and society as a whole. Social issues are often characterized by their impact on groups of people who are marginalized or disadvantaged, such as poverty, inequality, discrimination, and social injustice. These issues may be related to political, economic, cultural, or environmental factors and can affect various aspects of life, including health, education, employment, and access to resources.

Examples of social issues include gender inequality, racial discrimination, homelessness, access to healthcare, environmental degradation, and political corruption. Social issues are often complex and require collective action and systemic change to address them effectively.

Create a collage on an A4 size sheet on social issues prevalent in our society and the steps that can be taken to resolve these issues.

ASSESSMENT CRITERIA

Competencies exhibited and Presentation- 2 Marks

Content accuracy and originality- 2 Marks

Viva- 1 Mark

OR

TOPIC: SUSTAINABLE DEVELOPMENT

Sustainable Development is the Green policy of the future. Based upon this, students will devise sustainable ideas (eco-friendly) for various means of transportation that can be used to connect Islands groups of India with the mainland. The students will present their ideas with relevant pictures and information on an A4 size sheet.

ASSESSMENT CRITERIA

Presentation- 2 Marks

Content and Relevance - 2 Marks

Viva- 1 Mark



Bal Bharati
PUBLIC SCHOOL
PITAMPURA

| SUBJECT | हिंदी |
|-----------------------------------|---|
| TOPIC-PROJECT / ACTIVITY | अंडमान निकोबार द्वीप समूह के लिए एक विवरणिका (Brochure) बनाएँ जिससे वहाँ के पर्यटन स्थल, उष्णकटिबंध सुंदरता, समुद्री जीवन एवं सांस्कृतिक रूपांकनों इत्यादि के बारे में बताया गया हो। |
| LEARNING OUTCOME / SKILL ENHANCED | प्रत्येक विद्यार्थी पर्यटन से संबंधित विवरणों पर शोध कर आकर्षक विवरणिका बना पाने में सक्षम होगा। |
| RESOURCES | https://youtu.be/nhN7lwgYYKI?si=NBzOGvfj4f-YtwNH https://en.wikipedia.org/wiki/Lakshadweep https://youtu.be/i3WzUuHBP3I?si=JOjjYDfxQV8RhF1x |
| MODE OF SUBMISSION | ऑफ लाइन ए 4 पृष्ठ पर |
| RUBRICS | रचनात्मकता और प्रस्तुति- 2 अंक अनुसंधान और भाषा शुद्धता - 2 अंक प्रासंगिकता - 1 अंक |



Bal Bharati
PUBLIC SCHOOL
PITAMPURA

| SUBJECT | SANSKRIT |
|-----------------------------------|---|
| TOPIC-PROJECT / ACTIVITY | ”अण्डेमानलक्षद्वीपनिकोबार-इति द्वीपानाम् प्राकृतिक- सौन्दर्यम्” अस्मिन् विषये संस्कृतभाषायां दश पंक्तयः लिखन्तु। सम्बन्धित - चित्राणि अपि संलग्नं कुर्वन्तु। |
| LEARNING OUTCOME / SKILL ENHANCED | छात्राः संस्कृतभाषायां प्रदत्त -स्थलस्य विषये लेखितुम् समर्थाः भविष्यन्ति। |
| RESOURCES | https://youtu.be/OZvg_9cBnX4?i=jxiQKCRiGhOdcjs3 https://youtu.be/BYkulztyS0Y?i=2W8tlGH_jjOg4OSM https://youtu.be/IKSBdpQ3XyY?si=f-wcRRn044LNaOIA https://youtu.be/X1qcSNloKVY?si=FTXZGfbAoUQ8UnOR https://youtu.be/BYkulztyS0Y?si=5QqHMK349xtZNz12 |
| MODE OF SUBMISSION | ऑफ लाइन ए 4 पृष्ठ पर |
| RUBRICS | प्रस्तुतीकरण -1 विषय सामग्री -2 भाषा शुद्धता - 2 |



Bal Bharati PUBLIC SCHOOL

PITAMPURA

| SUBJECT | GERMAN |
|--|---|
| TOPIC- PROJECT / ACTIVITY | Create a poster spreading environmental awareness (in German) addressing the environmental challenges faced by the Lakshadweep and Andaman and Nicobar Islands. Suggest the conservation measures and highlight issues like coral bleaching, plastic pollution or endangered species. |
| LEARNING OUTCOME / SKILL ENHANCED | Each student will be able to: <ul style="list-style-type: none">• understand specific environmental challenges faced by the islands.• enhance research and visual communication skills. |
| RESOURCES | https://en.wikipedia.org/wiki/Lakshadweep https://en.wikipedia.org/wiki/Andaman_and_Nicobar_Environmental_Team |
| MODE OF SUBMISSION | Offline -A4 size sheet |
| RUBRICS | <ul style="list-style-type: none">• Content: 2 points• Creativity: 1 point• Research: 1 point• Language: 1 point |



| SUBJECT | FRENCH |
|---------------------------------------|---|
| TOPIC-PROJECT / ACTIVITY | Create a poster spreading environmental awareness (in French) addressing the environmental challenges faced by the Lakshadweep/Andaman and Nicobar Islands. Suggest the conservation measures and highlight issues like coral bleaching, plastic pollution or endangered species. |
| LEARNING OUTCOME/SKILL ENHANCED | Each student will be able to: <ul style="list-style-type: none">• understand specific environmental challenges faced by the islands.• enhance his/her research and visual communication skills. |
| RESOURCES | https://en.wikipedia.org/wiki/Lakshadweep https://en.wikipedia.org/wiki/Andaman and Nicobar Environmental Team |
| MODE OF SUBMISSION | Offline |
| RUBRICS | Content: 2 points Creativity: 1 point Research: 1 point Language: 1 point |



REVISION WORKSHEETS

Dear Students

Please refer to the details of the revision worksheets (P.P Publication/Subject based assignment). Kindly note that the worksheets are to be done in the booklet itself. For your reference, the PDF of the same will uploaded on Google Classroom.

| SUBJECT | NAME OF THE CHAPTER | WORKSHEET NO. |
|----------|---|--|
| ENGLISH | <ul style="list-style-type: none">• A Letter to God• Nelson Mandela-A Long Walk to Freedom• Two Stories About Flying | Worksheet no: 45 - 48 Worksheet no: 57 - 59 |
| MATHS | <ul style="list-style-type: none">• Number System (Real Numbers)• Polynomials• Pair of linear equations• Quadratic equations | 1A (Ques 1 to 20) 2A (Ques 1 to 20) 3A (Ques 1 to 20) 4A (Ques 1 to 20) |
| HINDI | <ul style="list-style-type: none">• पदबंध• वाक्य रूपांतरण• अनुच्छेद लेखन अभ्यास | कार्यपत्रिका-6 कार्यपत्रिका -7 कार्यपत्रिका-27 |
| GERMAN | <ul style="list-style-type: none">• Magst du grüne Bohnen• Präteritum• Adjektivendungen | Worksheets uploaded on GC |
| SANSKRIT | <ul style="list-style-type: none">• अपठितगद्यांशः• चित्रवर्णनम्• पत्रपूर्ति: , संवादपूर्ति: | Worksheets uploaded on GC |



REVISION WORKSHEETS

| SUBJECT | NAME OF THE CHAPTER | WORKSHEET NO. |
|-----------|--|---|
| FRENCH | <ul style="list-style-type: none">• Les compréhensions• Mettez les dialogues en ordre• Complétez les textes à l'aide des mots donnés• Les adjectifs et pronoms démonstratifs• Les adjectifs et pronoms possessifs• La négation• Les pronoms personnels | Worksheets uploaded on GC |
| PHYSICS | <ul style="list-style-type: none">• Light Reflection and refraction | Worksheet 9 B: Q 1,2,4,8,9,10,12 Worksheet 9 C: Q 1,2,5,6,7,8,9,12 |
| CHEMISTRY | <ul style="list-style-type: none">• Chemical reactions and equations | Worksheet 1A: Q1 to 15 Worksheet 1B: Q1 to 6 |
| BIOLOGY | <ul style="list-style-type: none">• Life Processes | Worksheet 5 C: Q 1 to Q14 |



Bal Bharati
PUBLIC SCHOOL
PITAMPURA

REVISION WORKSHEETS

| SUBJECT | NAME OF THE CHAPTER | WORKSHEET NO. |
|-----------|--|---|
| HISTORY | <ul style="list-style-type: none">Nationalism in IndiaPower Sharing | Worksheets 2A, 2B (Pages 5-9) Worksheet 1A (Pages 23-25) |
| ECONOMICS | <ul style="list-style-type: none">Sectors of Indian Economy | Worksheet will be uploaded on GC |
| GEOGRAPHY | <ul style="list-style-type: none">Resource and Development | Worksheet 1A and 1B (Pages 75-79) |