

A large, stylized illustration of an open book. The book is the central focus, with various school supplies and children around it. On the left page, the text 'SUMMER VACATION ACTIVITIES' is written in large, bold, pink letters. Below it, a purple diamond shape contains the text 'WEEK 2'. On the right page, the school logo and name 'Bal Bharati PUBLIC SCHOOL Pitampura' are visible, followed by 'CLASS-IV (2023-24)' in red and black text. The illustration includes a boy with a pencil, a girl with a hand, an hourglass, a boy with glasses and a map, a globe, a girl with a pencil, a girl with a paintbrush, a boy with a book, a girl with a pencil, a stack of colorful blocks, and a large pencil. The background is white.

SUMMER VACATION ACTIVITIES

WEEK 2



CLASS-IV
(2023-24)

Dear Children

The holiday season is the perfect time to relax and reflect on the blessings in our lives besides working towards enhancing our skills. This year, we have tried to keep the Holiday Homework simpler yet informative and more interesting. The intent is to promote not only academic learning through interesting assignments but also activities which can gradually become hobbies.

Here are a few suggestions for you:-

- **Make sure to spend quality time with your family.**
- **Help your mother in the household chores.**
- **Read interesting books and watch good English programmes.**
- **Play indoor games with your family.**
- **Follow the instructions given by your teachers and try to complete your HHW independently.**



Take care and stay safe !!



Visit the websites of different states of India to find out about the natural vegetation (flora) of these different regions according to your roll no.s:

Roll Nos.-1 to 13-
Aquatic Plants

Roll Nos.- 14 to 26-
Plants of the Hilly Areas

Roll Nos.- 27 to 39-
Desert Plants

Roll Nos.- 40 to 51-
Plants of Marshy Areas

EXPLORING THE GREENS

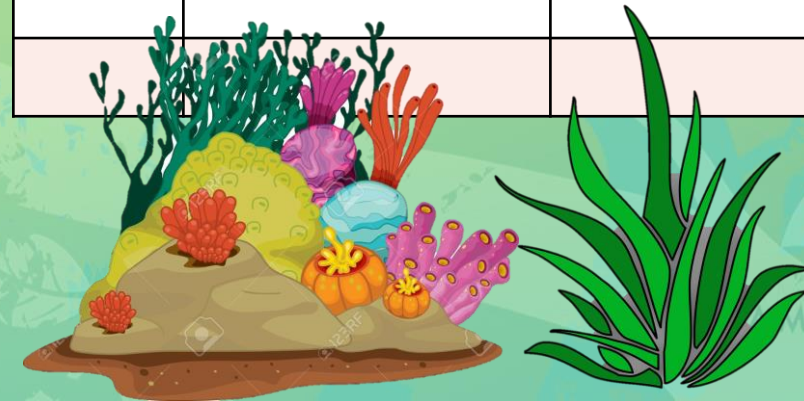
Plants differ from each other depending on the surroundings where they are growing.

Let us explore the 'Diverse World of Plants' and learn more about our green friends.



List the common species of plants found in each region and describe their special adaptive features. Support your findings with appropriate pictures or diagrams.

S.NO	NAME OF THE PLANT	ADAPTATIVE FEATURE



TASK- 2

Plants all over the earth are also bearing the brunt of climate change and human activities.

Find out about these factors, natural and man-made, that are causing the change in vegetation patterns of the regions, allocated to you and describe them in a paragraph.



Compile Task 1 and 2 in a beautifully decorated folder.

TASK- 3

Research and create a colourful 3D Model of the **Habitat (Diorama)**, depicting its flora and fauna using a shoebox, cardboard, coloured papers, and common household material like buttons, stones, beads etc. Some links are provided here for your reference:

<https://www.generationgenius.com/activities/habitats-activity-for-kids/>

<https://www.youtube.com/watch?v=-Loj-YoSbfw>

<https://www.youtube.com/watch?v=nAZVyY-0xCs>

