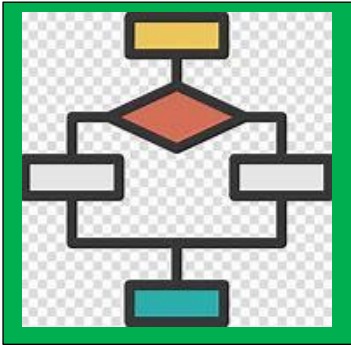




Lesson 2: Programming Basics - Part 2

Name - _____ CLASS / SEC- _____ Date: _____



Flowchart

Flowchart: It a diagrammatic/graphical representation of an Algorithm.

Herman Hollerith and John Von Neuman developed flowchart.







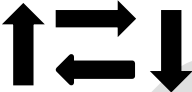
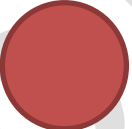
How do we make a flowchart?

Advantages of Flowchart	Disadvantages of Flowchart
It's easy to understand and is effective way to analyse the problem.	It can become complex if the program logic is long.
It helps in finding errors.	A change in a flowchart can be done by redrawing it.

Children in a flowchart, each step is represented using a specific geometrical symbol and these symbols are connected to each other by arrows.



Basic symbols that are used while making a flowchart

Symbol	Function
Start/Stop Box 	Its oval and represents the beginning and at the ending of a flowchart.
Input/Output Box 	A parallelogram shaped box represents the input and output of the information.
Process Box 	A rectangular shaped box also known as action symbol. Represents a step of a process.
Decision Box 	A diamond shaped box represents a decision in a flowchart.
Flowlines 	The arrows represent the flow of logic in a flowchart
Connectors 	A circle shaped symbol used to join parts of a flowchart.

Activity Time

1

To be done in word document. Create a Flowchart for making a sandwich.

2

Create a flowchart for washing your socks.

Please check the following YouTube link for more information

<https://youtu.be/iFr7zy4HTZc>