



BAL BHARATI PUBLIC SCHOOL, PITAMPURA, DELHI – 110034

WEEKEND ACTIVITIES

Classes IX AND X

SUBJECT:ART

TOPIC: KALIGHAT PATT CHITRA (SCROLL PAINTING)

TASK: Create a scroll with the KALIGHAT – painting style. The story should be narrated in four parts. The scroll should have four sheets joined together depicting the story line.

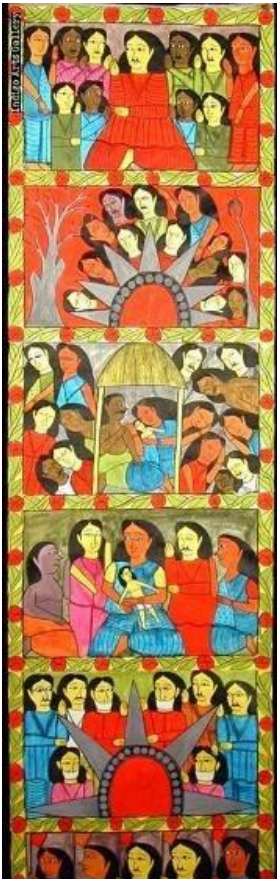
MATERIAL REQUIRED:

- 4 A4 Cartridge sheets.
- Eraser / Pencil / Scale / Fevicol / Tape
- Sketch Pens / Colour Pencils / Brush Colours

Write in brief about **KALIGHAT** painting style focussing on the points given below:

- Main features of the style
- Its origin- the state it belongs to
- Type of stories narrated and depicted through the scroll.

You may take reference from the internet.



(A Sample Image For Your Reference)

SUBJECT - CRITICAL THINKING WORKSHEET
BHUJO TOH जानें

Puzzle 1:

Find six hidden words in the picture given below:



PUZZLE 2:

The following word picture puzzles are pictograms that include a hidden word or a common phrase. Your task is to decipher the puzzles. For instance,



Answer – Travel overseas

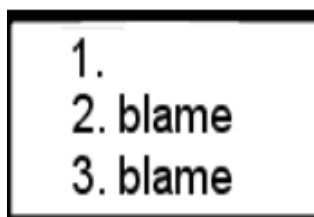
a)



b)



c)



d)



e)



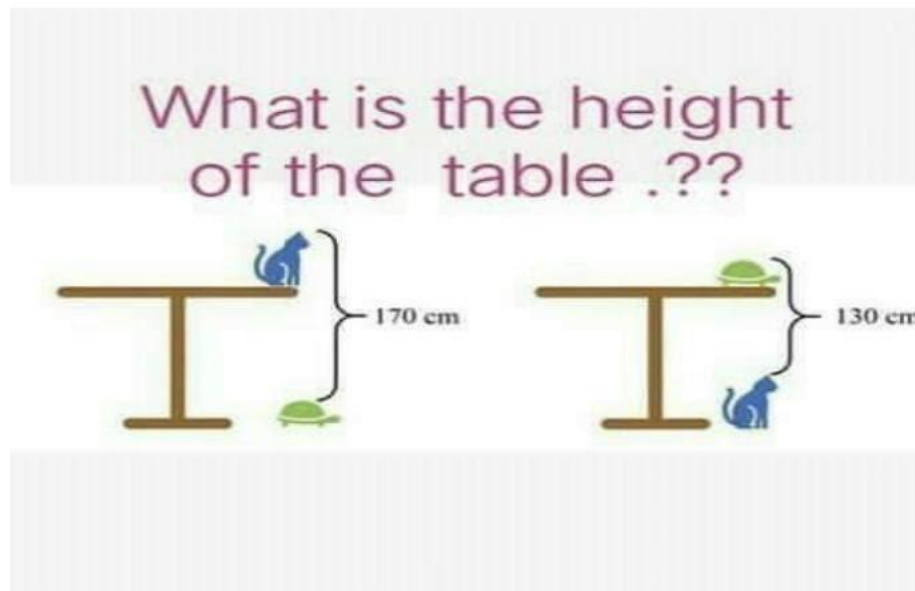
Puzzle 3: Electroplating

The process of depositing a layer of any desired metal on another material by means of electricity is called electroplating. It is widely used in the industries for coating metal objects with a thin layer of a different metal. The layer of metal deposited has some desired property, which the metal of the object lacks. For example, chromium plating is done on many objects such as car parts, bath taps, etc. because it has a shiny appearance and does not corrode.

A): Shambhavi wanted to coat a brass key with copper and decided to set up an experiment. She took the brass key as one electrode and a copper plate as the other electrode. What should be the electrolyte for this experiment to work? Give reasons.

B): The time taken for the brass key to be completely electroplated would depend on which factor(s)?

Puzzle 4:-



Puzzle 5: Match the joke to its answer

Joke	Answer
1. What's easy to get into but hard to get out of?	Because it's too far to walk
2. Why did the man pour veggies all over the world?	Nine
3. When is a car not a car?	Very big hands
4. If 2 is company and 3 is a crowd, what's 4 and 5?	He wanted peas on Earth.
5. How can you make a hamburger roll?	On the bottom
6. If I had 6 oranges in one hand and 8 in the other, what would I have?	When it turns into a driveway
7. Why did the candle fall in love?	Trouble
8. Where was the Declaration of Independence signed?	Take it up a hill and push it down.
9. Why do ducks fly south?	He met the perfect match.

Puzzle 6:-

वर्ग पहेली सुलझाएँ।

1	2		3	■	4
■		■	5		
6		7		■	
	■		■	8	■
9	10		11	■	12
■		■	13		
14				■	

बायें से दायें →

1. पंजाब और राजस्थान की सीमाएं भारत के किस पड़ोसी देश को छूती हैं।
5. भारत के राष्ट्रीय गान 'जन गण मन' में 'पंजाब, सिंध, गुजरात,' के ठीक बाद किस क्षेत्र का नाम आता है।
6. विधानसभा सदस्य को _____ कहते हैं।
8. एकमात्र अविभाज्य समसंख्या।
9. मीरा के गुरु का नाम।
13. एक अंग जो मानव शरीर में जोड़े के रूप में मौजूद है - हृदय या फेफड़ा।
14. ताशकंद और बगदाद में से जिस शहर में लाल बहादुर शास्त्री की मौत हुई थी।

ऊपर से नीचे ↓

2. बाली _____ का राजा था।
3. सफेद रंग का नमकीन पदार्थ जिसका रासायनिक नाम सोडियम क्लोराइड है।
4. सेठ की पत्नी।
6. भगवन श्रीकृष्ण ने दुर्योधन का भोजन छोड़कर जिसके घर साग खाया था।
7. भगवन श्रीकृष्ण का पालन-पोषण करने वाली माता का नाम।
10. स्वदेश का विपरीत शब्द।
11. शांति का प्रतीक रंग।
12. 'लड़ना' की भाव वाचक संज्ञा।

ANSWER KEY- MENTAL ABILITY WORKSHEET (Shared on 17.04.20)

- Q1 E
- Q2 C
- Q3 A
- Q4 A
- Q5 C
- Q6 C
- Q7 C
- Q8 D
- Q9 D
- Q10 D
- Q11 B
- Q12 C
- Q13 B
- Q14 C
- Q15 B

BBPS, PITAMPURA